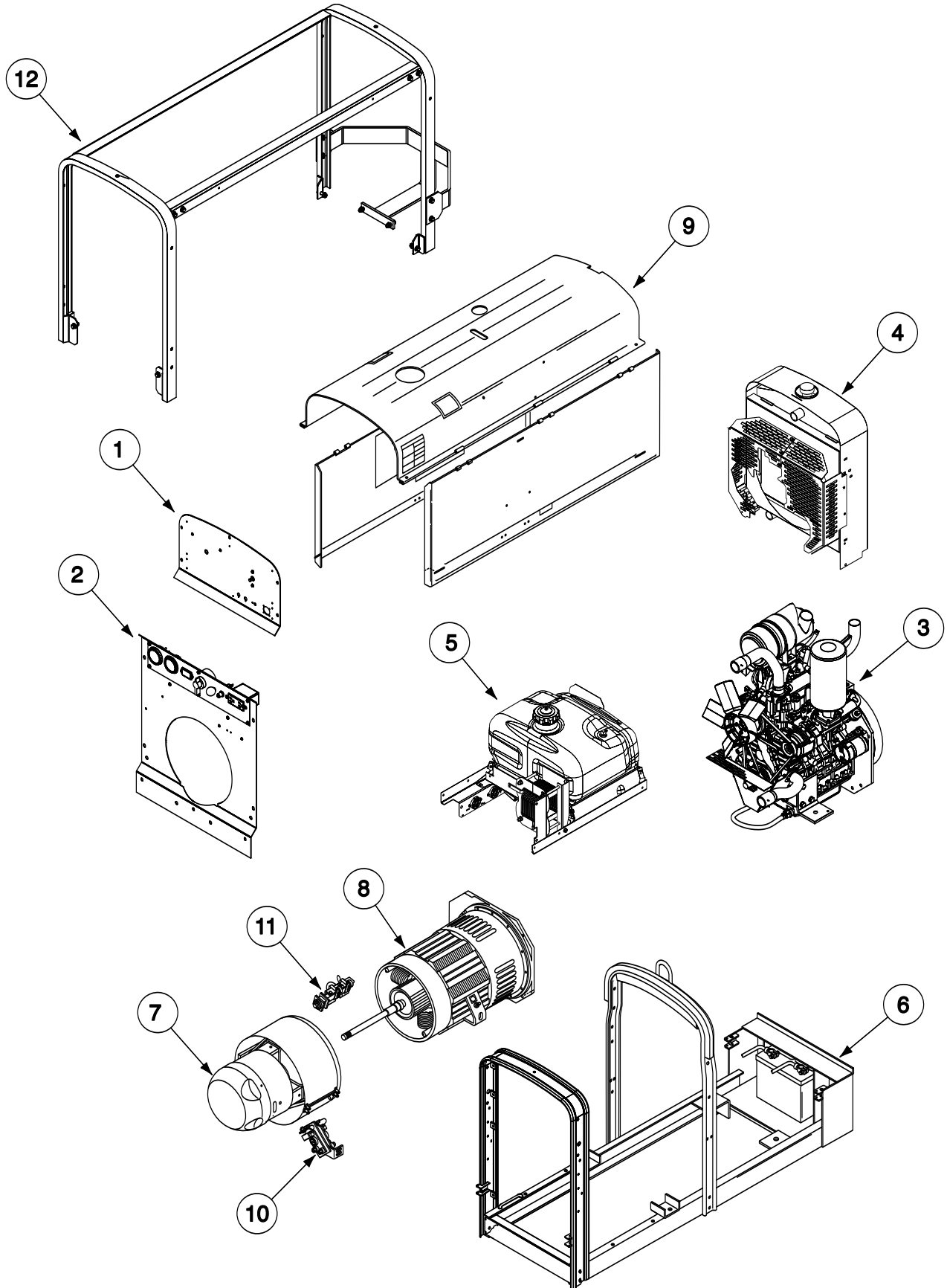


PARTS LIST FOR
D300K 3+3 SE KUBOTA

Red-D-Arc
Welderentals®

ILLUSTRATION OF SUB-ASSEMBLIES



D300K 3+3 SE KUBOTA

For Code: 11948

Do Not use this Parts List for a machine if its code number is not listed. Contact the Service Department for any code numbers not listed.

Use the Illustration of Sub-Assemblies page and the table below to determine which sub assembly page and column the desired part is located on for your particular code machine.

Sub Assembly Item No.		1	2	3	4	5	6	7	8
SUB ASSEMBLY PAGE NAME	Miscellaneous Items	Upper Control Panel Assembly	Lower Control Panel Assembly	Engine Assembly	Radiator Assembly	Fuel Tank Assembly	Base & Lift Bale Assembly	Welding Generator & Coupling (1 of 2)	Welding Generator & Coupling (2 of 2)
PAGE NO.	P-737-B	P-737-C	P-737-D	P-737-E	P-737-F	P-737-G	P-737-H	P-737-J	P-737-K
CODE NO.									
11948	1	1	1	1	1	1	1	1	1

D300K 3+3 SE KUBOTA

For Code: 11948

Do Not use this Parts List for a machine if its code number is not listed. Contact the Service Department for any code numbers not listed.

Use the Illustration of Sub-Assemblies page and the table below to determine which sub assembly page and column the desired part is located on for your particular code machine.

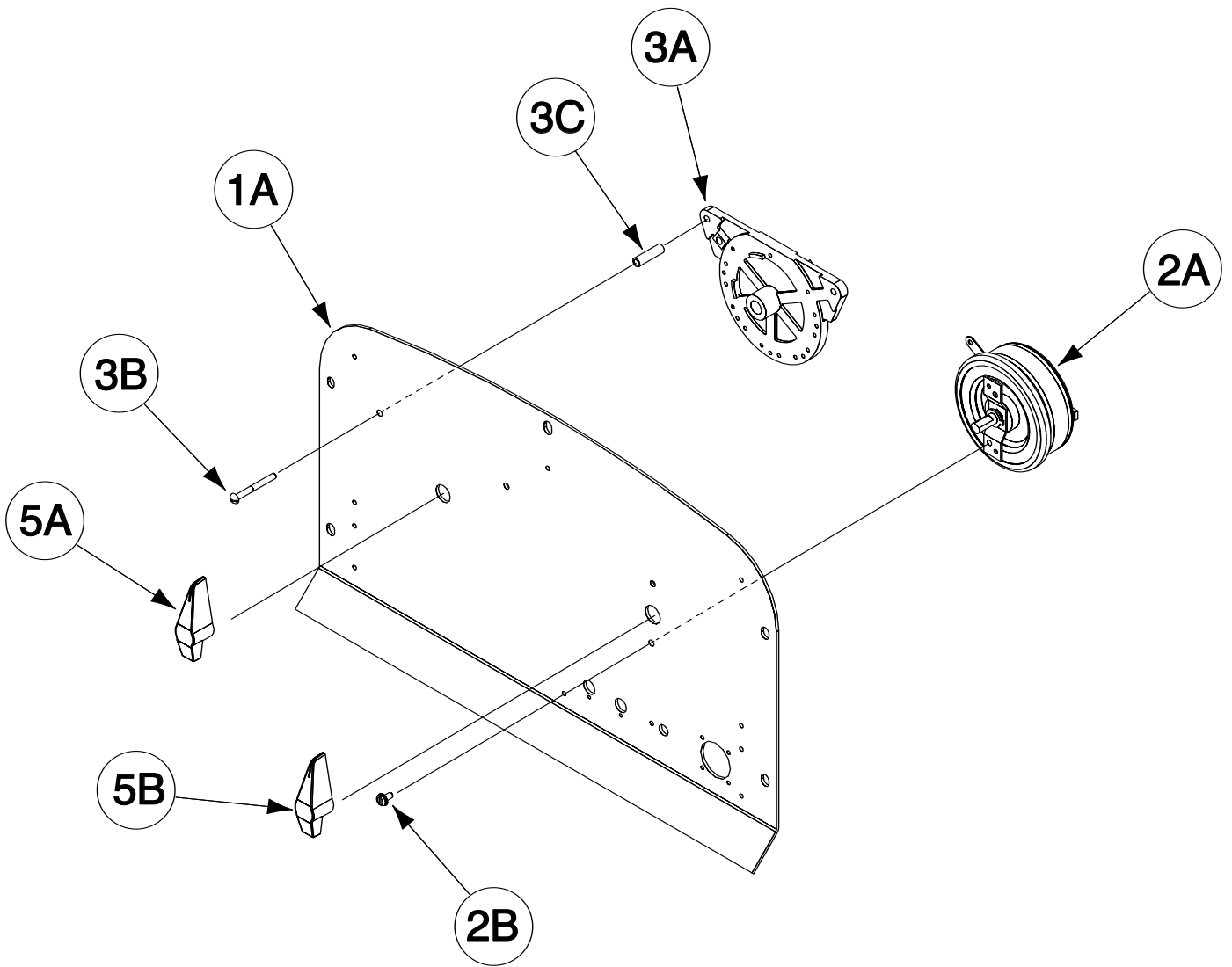
Sub Assembly Item No. 	9	10	11	12					
SUB ASSEMBLY PAGE NAME 	Roof & Doors	Alternator Brush Holder	Generator Brush Holder	Roll Cage Assembly					
PAGE NO. 	P-737-L	P-737-M	P-737-N	P-737-P					
CODE NO. 									
11948	1	1	1	1					

Indicates a change this printing.

Use only the parts marked "x" in the column under the heading number called for in the model index page.

DESCRIPTION	PART NO.	QTY.	1	2	3	4	5	6	7	8	9
Plug & Lead Assembly (P10)	S14165-472	1	X								
Plug & Lead Assembly (J5)	S14165-473	1	X								
Engine Mounting Ref.	M8859-93	1	X								
Engine Shutoff Rod	S30143	1	X								
Engine Shutoff Spring	S27402	1	X								
Wiring Harness	G7547	1	X								
Exhaust Elbow	S30169	1	X								
Exhaust Clamp	S30170	1	X								
Output Terminal Connector	S30174	2	X								

Upper Control Panel Assembly

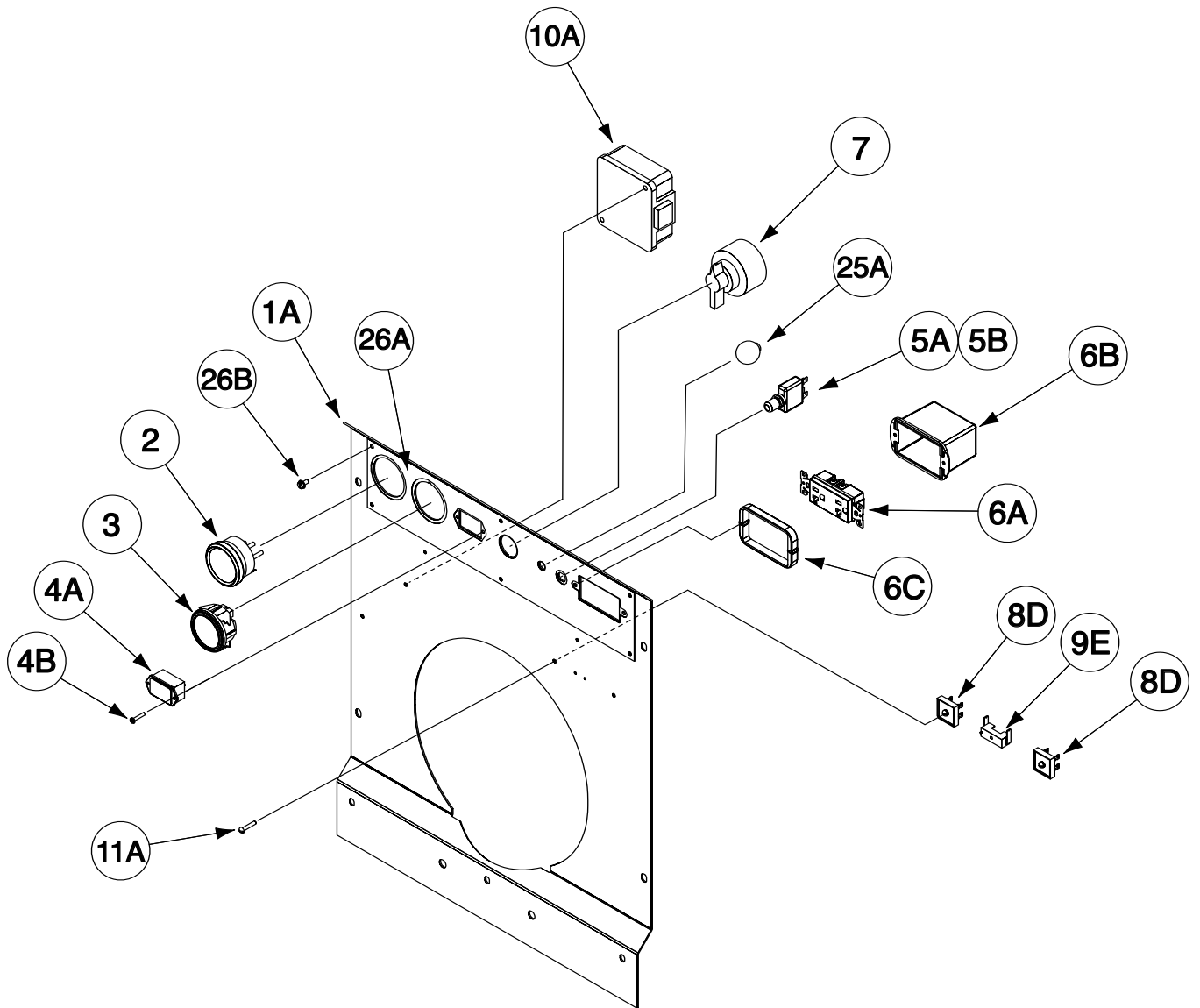


Indicates a change this printing.

Use only the parts marked "x" in the column under the heading number called for in the model index page.

ITEM	DESCRIPTION	PART NO.	QTY.	1	2	3	4	5	6	7	8	9
1	Upper Control Panel Assembly, Includes:	M24976	1	X								
1A	Upper Control Panel	M24975	1	X								
2A	Rheostat	M5090-C	1	X								
2B	Sems Screw	T10082-4	2	X								
2C	#8-32 x .50 RHS (BR) (Not Shown)	CF000102	2	X								
2D	Lock Washer (Not Shown)	T9695-3	2	X								
2E	#8-32 BR HN (Not Shown)	CF000103	4	X								
3A	Selector Switch Assembly	M13335	1	X								
3B	#10-24 x 1.75 RHS	CF000127	2	X								
3C	Spacer	S10918-60	2	X								
3D	Plain Washer (Not Shown)	S9262-27	2	X								
3E	Lock Washer (Not Shown)	T9695-1	2	X								
3F	#10-24 HN (Not Shown)	CF000010	2	X								
4A	Upper Nameplate (Not Shown)	L16338	1	X								
4B	Self Tapping Screw (Not Shown)	S8025-92	8	X								
5A	Control Handle (Selector Switch)	M13989-1	1	X								
5B	Control Handle (Rheostat)	S16664-13	1	X								

Lower Control Panel Assembly

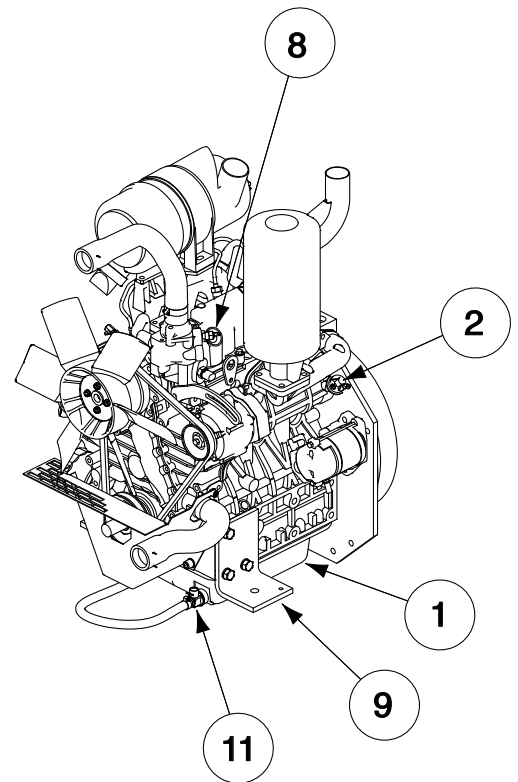
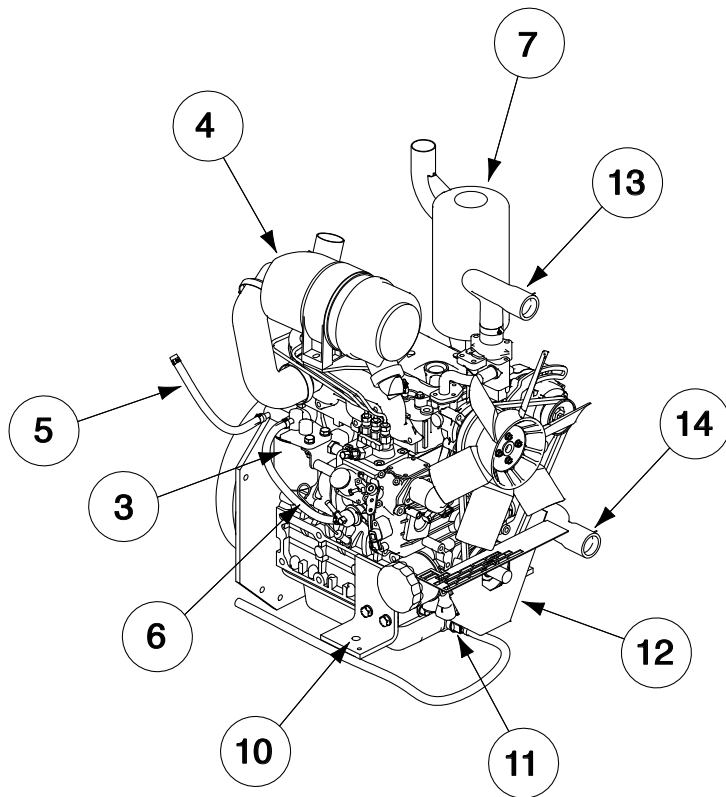


Indicates a change this printing.

Use only the parts marked "x" in the column under the heading number called for in the model index page.

ITEM	DESCRIPTION	PART NO.	QTY.	1	2	3	4	5	6	7	8	9
1	Lower Control Panel Assembly, Includes:	G7548	1	X								
1A	Lower Control Panel	L16337	1	X								
2	Ammeter	S7514-7	1	X								
3	Water Temperature Gauge	S25154-2	1	X								
4A	Hour Meter	S17475-6	1	X								
4B	#6-32 x .75 PPNHS	S18825-1	2	X								
4C	Lock Washer (Not Shown)	T9695-2	2	X								
4D	#6-32 HN (Not Shown)	CF000005	2	X								
5A	Circuit Breaker (20A, 250VAC)	T12287-31	1	X								
5B	Sealing Boot	S22061-1	1	X								
6A	GFCI Receptacle (115V)	S24410	1	X								
6B	GFCI Cover	L13286	1	X								
6C	Mounting Bracket	S27167	1	X								
6D	Thermoplastic Screw (Not Shown)	S24738-3	2	X								
6E	Receptacle Cover (Not Shown)	M16996	1	X								
7	Start Switch & Handle	S29921	1	X								
8A	#8-32 HN (Not Shown)	CF000042	2	X								
8B	#8-32 x .875 RHS (Not Shown)	CF000059	2	X								
8C	Plain Washer (Not Shown)	S9262-3	2	X								
8D	Diode Bridge (35A, 800V)	T13637-5	2	X								
8E	Lock Washer (Not Shown)	T4291-A	2	X								
9A	#4-40 x .375 RHS (Not Shown)	CF000001	1	X								
9B	#4-40 HN (Not Shown)	CF000002	1	X								
9C	Plain Washer (Not Shown)	S9262-39	1	X								
9D	Fuse (15A, 250V) (Not Shown)	T10728-8	1	X								
9E	Fuse Holder	T15011-1	1	X								
9F	Lock Washer (Not Shown)	T4291-B	1	X								
10A	Engine Control Unit (Supplied w/Engine)	*	1	X								
10B	E10-24 x 2.75 HHCS (Not Shown)	CF000049	2	X								
10C	Spacer (Not Shown)	S10918-69	2	X								
10D	Plain Washer (Not Shown)	S9262-27	2	X								
10E	Lock Washer (Not Shown)	T9695-1	2	X								
10F	#10-24 HN (Not Shown)	CF000010	2	X								
11A	Ground Screw	S9225-36	2	X								
11B	Lock Washer (Not Shown)	T9695-1	2	X								
11C	#10-24 HN (Not Shown)	CF000010	4	X								
18	MOV (Not Shown)	S28445	1	X								
25A	Knob	T10889	1	X								
25B	Bushing (Not Shown)	T12380-6	1	X								
26A	Nameplate	L16339	1	X								
26B	Self Tapping Screw	S8025-92	6	X								
27	Guard (Not Shown) (Mounts to Case Front Output Rail)	M24953	1	X								
28	Guard (Not Shown) (Mounts to Case Front- Fuel Tank Rail)	M24952	1	X								

Engine Assembly



Indicates a change this printing.

Use only the parts marked "x" in the column under the heading number called for in the model index page.

ITEM	DESCRIPTION	PART NO.	QTY.	1	2	3	4	5	6	7	8	9
1	Engine Assembly (L16260-1), Includes: Engine (M24643)	NSS	1	X								
		NSS	1	X								
2	Oil Pressure Switch/Sender Pipe Adapter	S14446	1	X								
		S25853	1	X								
3	Fuel Filter (Supplied w/Engine) Fuel Filter Bracket 3/8 x 1.25 HHB 3/8-16 HN Lock Washer	*	1	X								
		S29927	1	X								
		CF000105	2	X								
		CF000067	2	X								
		E106A-16	2	X								
4	Air Cleaner Bracket M8-1.25 x 20mm HHS w/Lock Washer (Supplied w/Engine) Plain Washer Air Filter Mounting Band Air Filter 5/16-18 x 1.25 HHCS 5/16-18 HN Lock Washer Plain Washer Air Intake Hose Hose Clamp	M24648	1	X								
		*	2	X								
		S9262-120	2	X								
		M20359	1	X								
		M20358	1	X								
		CF000028	2	X								
		CF000029	2	X								
		E106A-3	2	X								
		S9262-121	4	X								
		M20357	1	X								
S10888-33	2	X										
5	Flex Tube (Fuel Separator to Fuel Filter) Hose Clamp	T10642-86	1	X								
		T13777-1	2	X								
6	Flex Tube (Fuel Filter to Pump) Hose Clamp	T10642-269	1	X								
		T13777-1	2	X								
7	Muffler Gasket (Supplied w/Engine) M8-1.25 x 25mm HHS w/Lock Washer (Supplied w/Engine)	L16574	1	X								
		*	1	X								
		*	4	X								
8	Temperature Sensor Bushing	S27248	1	X								
		S27286	1	X								
9	Engine Mounting Foot (Left) Plain Washer M12-1.25 x 35mm HHS (Supplied w/Engine) M12 Lock Washer (Supplied w/Engine)	M20367-1	1	X								
		S9262-80	3	X								
		*	3	X								
		*	3	X								
10	Engine Mounting Foot (Right) Plain Washer M12-1.25 x 35mm HHS (Supplied w/Engine) M12 Lock Washer (Supplied w/Engine)	M20367-2	1	X								
		S9262-80	3	X								
		*	3	X								
		*	3	X								
11	Oil Drain Valve Flex Hose Clamp	S23024-2	1	X								
		T10642-350	1	X								
		S10888-27	1	X								
12	Lower Guard M10-1.25 x 25mm SHCS M10 Lock Washer M8-1.25 x 20mm SCHS Lock Washer	L13687	1	X								
		T14731-49	2	X								
		S17400-1	2	X								
		T14731-3	1	X								
		E106A-3	1	X								
13	Upper Radiator Hose Hose Clamp Hose Clamp	L12244	1	X								
		S10888-44	1	X								
		S10888-8	1	X								
14	Lower Radiator Hose Hose Clamp Hose Clamp	L122445	1	X								
		S10888-44	1	X								
		S10888-8	1	X								

NSS - Not Sold Separately

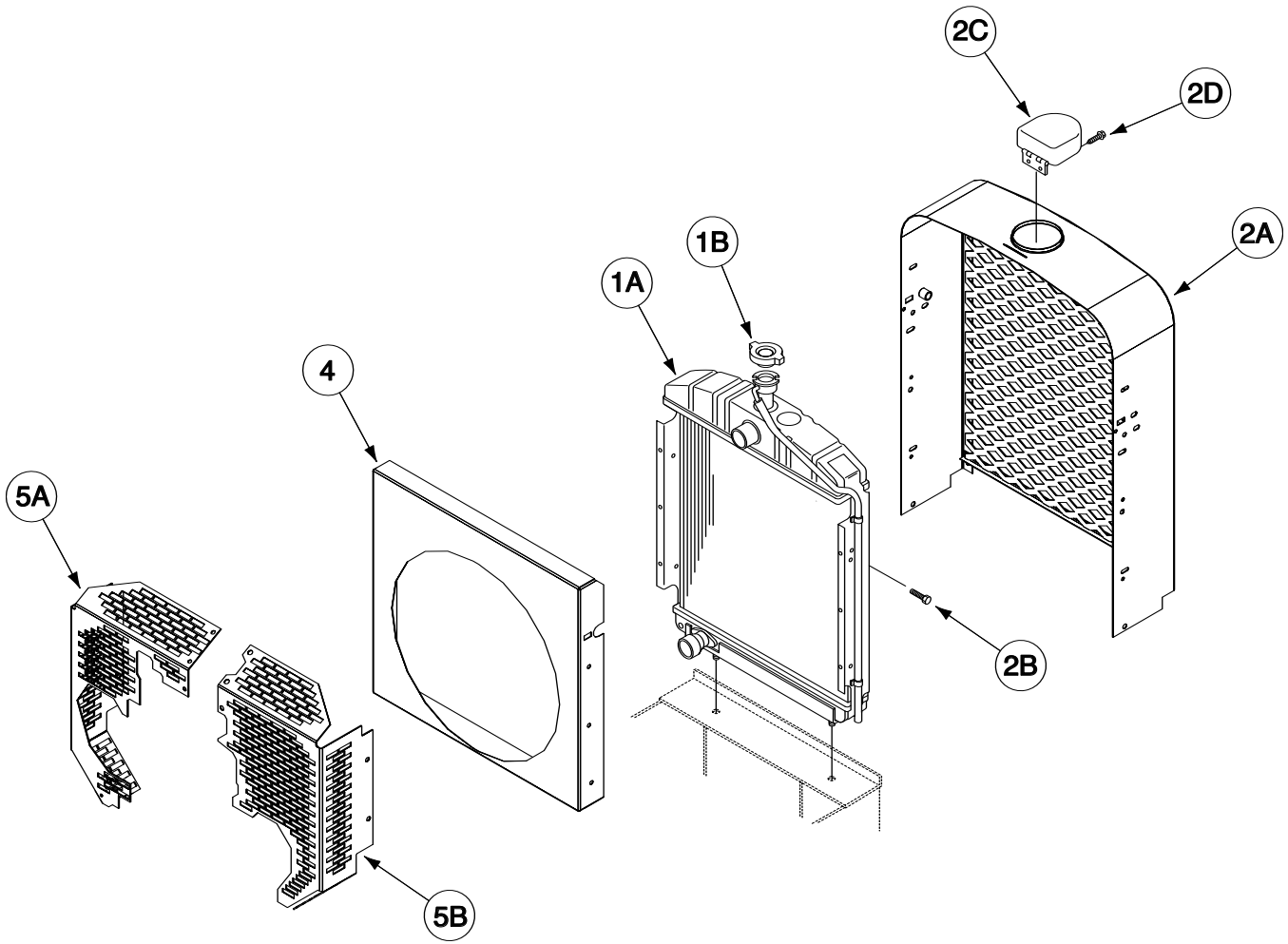
D300K 3+3 SE KUBOTA

Oct-13

* Contact Engine Manufacturer

Red-D-Arc
Welderrentals.

Radiator Assembly

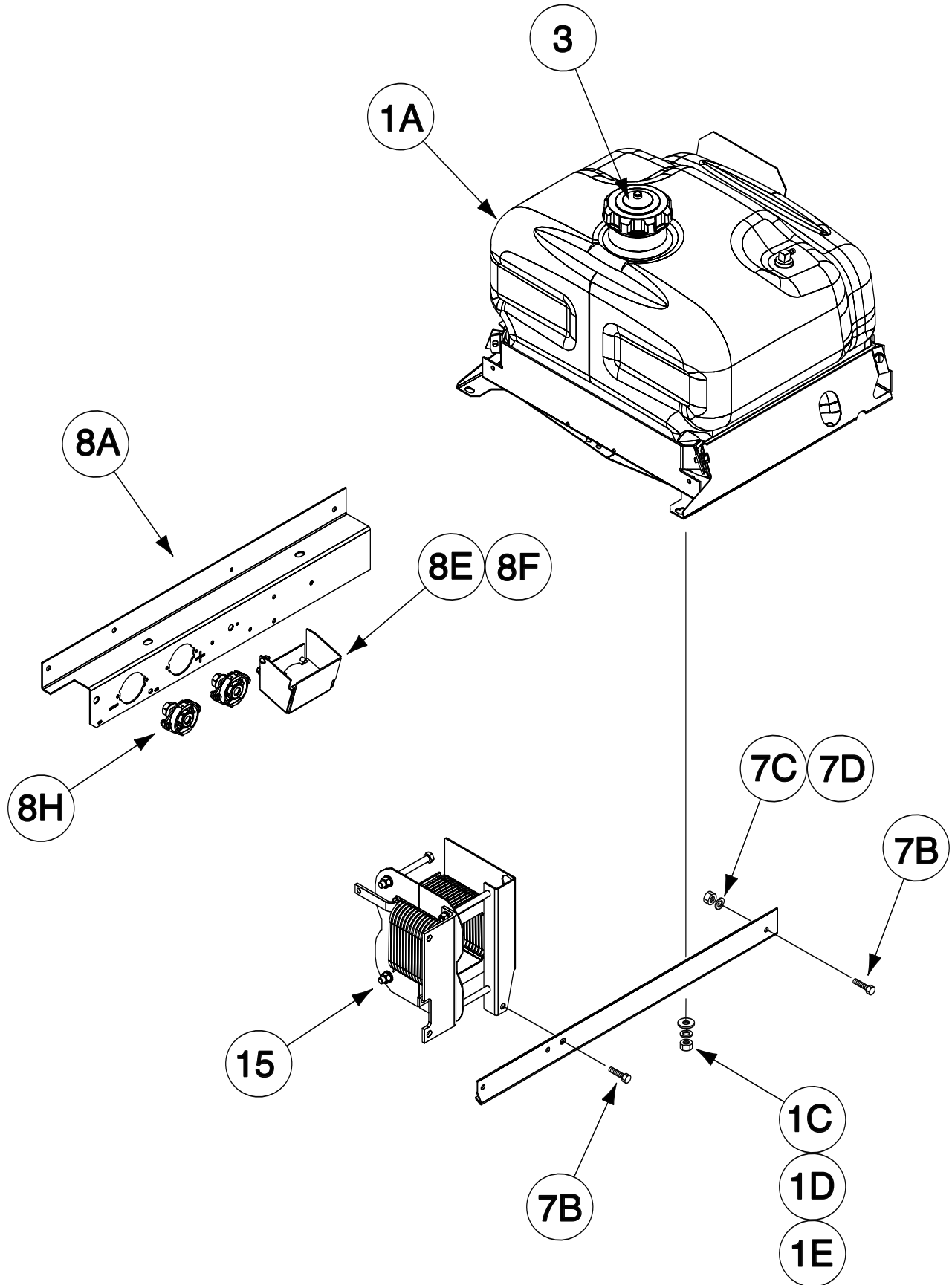


Indicates a change this printing.

Use only the parts marked "x" in the column under the heading number called for in the model index page.

ITEM	DESCRIPTION	PART NO.	QTY.	1	2	3	4	5	6	7	8	9
1A	Radiator	G3432	1	X								
1B	Radiator Cap	S9970	1	X								
1C	Drain Cock (Not Shown)	T9966	1	X								
2A	Radiator Shell	L5163-2	1	X								
2B	Thread Forming Screw	S9225-8	4	X								
2C	Radiator Cap Cover	M8003	1	X								
2D	Self Tapping Screw	S8025-12	2	X								
4	Fan Shroud Assembly	M19051	1	X								
5A	Fan Guard	L16395	1	X								
5B	Fan Guard (Alternator Side)	L16396	1	X								

Fuel Tank & Mounting

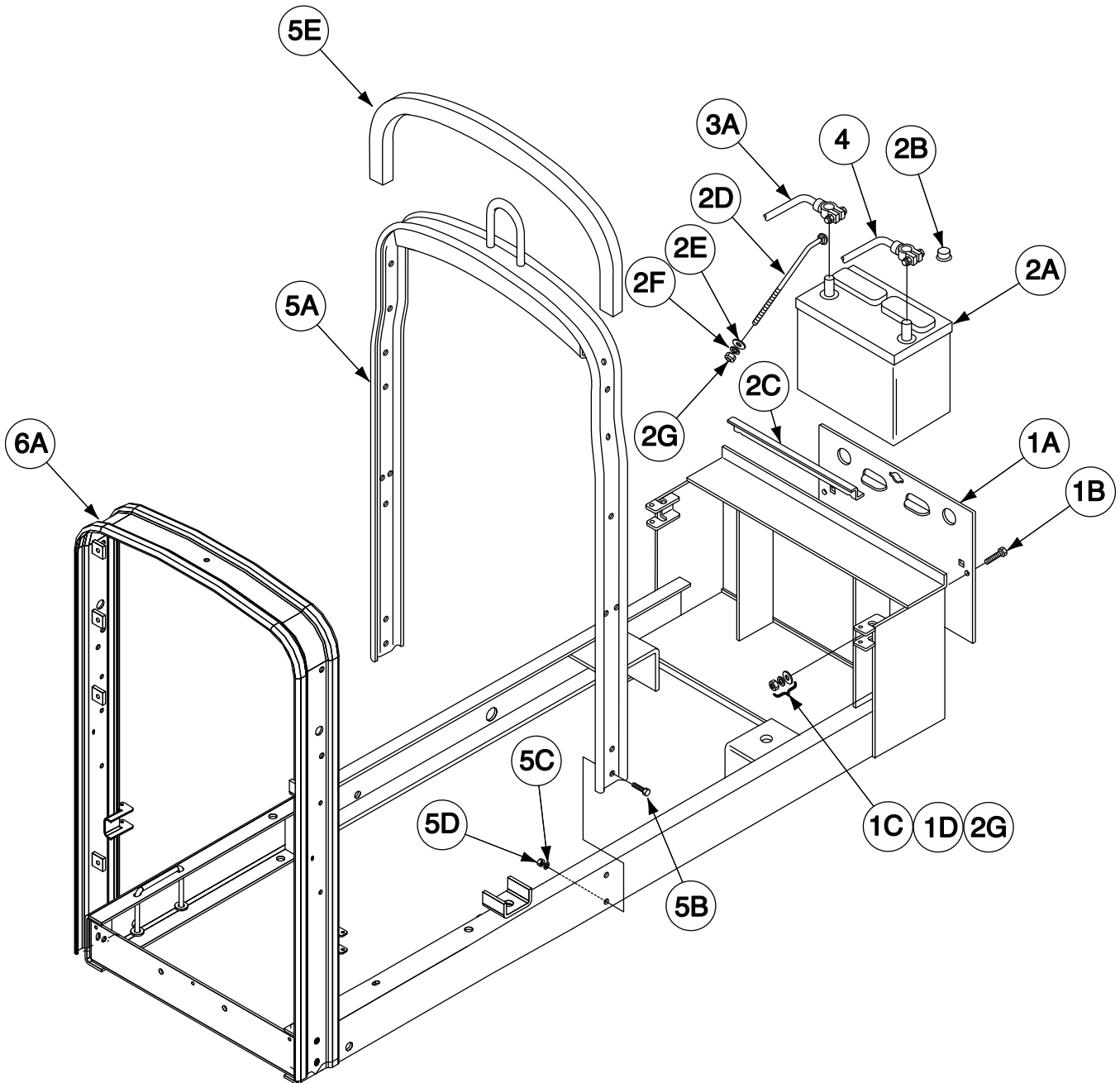


Indicates a change this printing.

Use only the parts marked "x" in the column under the heading number called for in the model index page.

ITEM	DESCRIPTION	PART NO.	QTY.	1	2	3	4	5	6	7	8	9
1A	Fuel Tank Asbly (Plastic Tank)	L15079	1	X								
1B	3/8-16 x 2.00 HHCS (Not Shown)	CF000071	4	X								
1C	Plain Washer	S9262-56	8	X								
1D	Lock Washer	E106A-4	4	X								
1E	3/8-16 HN	CF000067	4	X								
2	Gasket(Not Shown)	S10437-G	1	X								
3	Fuel Cap	S20541	1	X								
5A	Hose Connector (Not Shown)	T13595	1	X								
5B	Gear Clamp (Not Shown)	S10888-35	2	X								
7A	Fuel Tank Rail	M12479-1	1	X								
7B	Thread Forming Screw	S9225-22	2	X								
7C	Lock Washer	T9860-3	2	X								
7D	5/16-18 HN	CF000029	2	X								
	Output Panel Asbly, Includes:	M16685-4	1	X								
8A	Output Rail	M13946-1	1	X								
8B	Thread Forming Screw (Not Shown)	S9225-22	2	X								
8C	Lock Washer (Not Shown)	T9860-3	2	X								
8D	5/16-18 HN (Not Shown)	CF000029	2	X								
8E	Remote/Local Receptacle Asbly	M16779-2	1	X								
8F	Remote/Local Receptacle Bracket	M25075	1	X								
8G	Thread Forming Screw (Not Shown)	S9225-8	2	X								
8H	Output Stud	M13900	2	X								
8J	Self Tapping Screw (Not Shown)	S8025-91	4	X								
8K	Self Tapping Screw (Not Shown)	S8025-75	1	X								
8L	Output Rail Guard (Not Shown)	S24765	1	X								
9	Fuel Return Line (.1875 ID/.406 OD x 27.00) (Not Shown)	T10642-231	1	X								
10	Fuel Hose (Tank to Separator) (.312 ID/.562ODx10.5) (Not Shown)	T10642-86	1	X								
15	Choke Assembly	M24836	1	X								

Base & Lift Bale Assembly

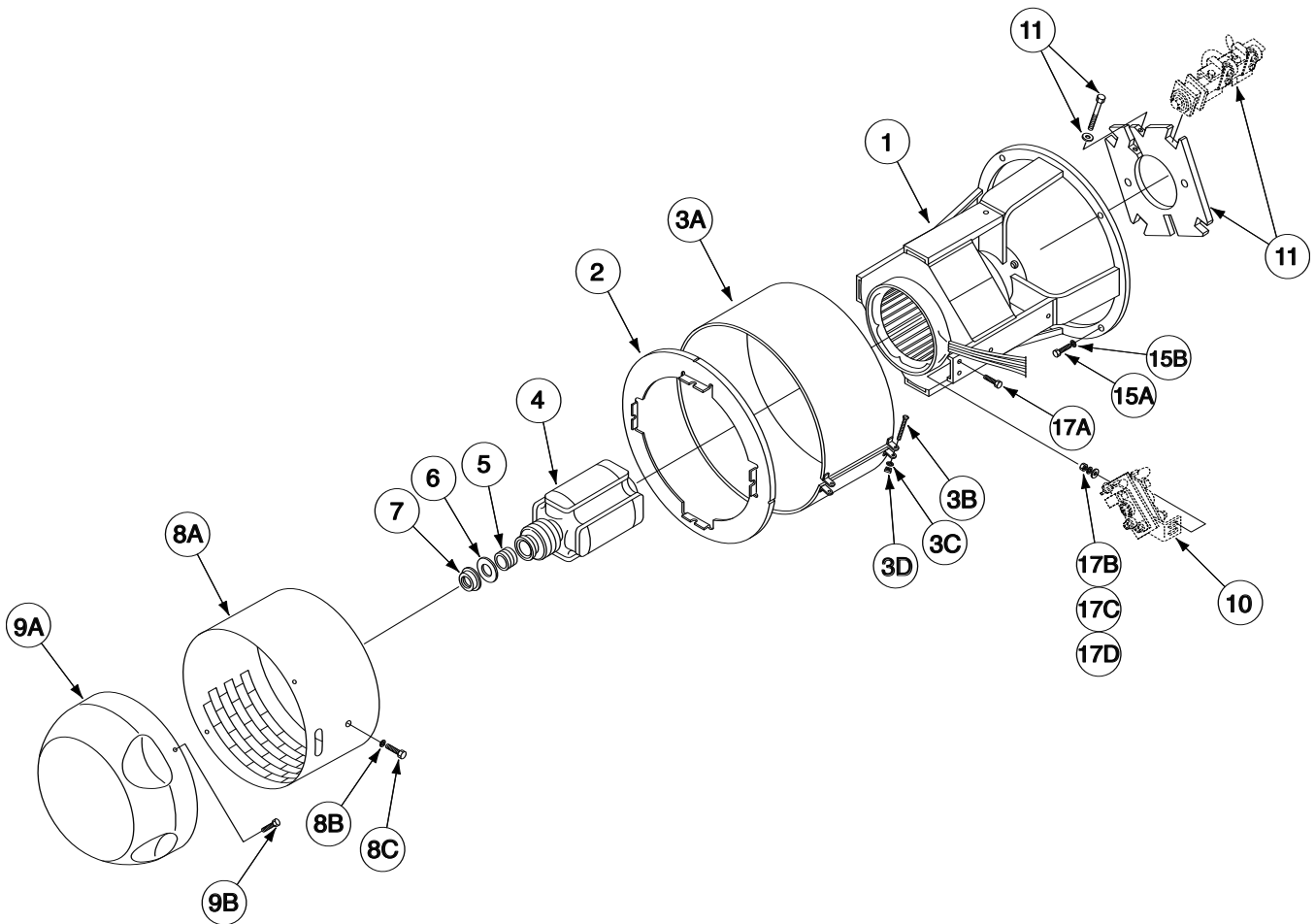


Indicates a change this printing.

Use only the parts marked "x" in the column under the heading number called for in the model index page.

ITEM	DESCRIPTION	PART NO.	QTY.	1	2	3	4	5	6	7	8	9
1	Base Assembly	G7568	1	X								
1A	Battery Mounting Panel	S15639-1	1	X								
1B	1/4-20 x .50 HHCS	CF000012	2	X								
1C	Lock Washer	E106A-2	2	X								
1D	Plain Washer	S9262-23	2	X								
2A	Battery (M9399-4)	N/A	1	X								
2B	Cap (Insulates Neg. Terminal)	T14654	1	X								
2C	Battery Bracket	S12128	1	X								
2D	Carriage Bolt	T11888	2	X								
2E	Plain Washer	S9262-23	2	X								
2F	Lock Washer	E106A-2	2	X								
2G	1/4-20 HN	CF000017	2	X								
3A	Positive Battery Cable	S8070-29	1	X								
3B	Lead Clip (Not Shown)	S24469	1	X								
3C	Speed Nut (Not Shown)	T11525-5	1	X								
3D	Thread Forming Screw (Not Shown)	S9225-8	1	X								
4	Negative Battery Cable & Ground Strap	S14922-1	1	X								
4A	Thread Forming Screw (For Securing Cable & Strap) (Not Shown)	S9225-26	2	X								
5A	Lift Bale & Hook Assembly	L9084	1	X								
5B	1/2-13 x 1.25 HHCS	T8833-24	4	X								
5C	Lock Washer	E106A-5	4	X								
5D	1/2-13 HN	CF000027	4	X								
5E	Foam	M15045-37	1	X								
6A	Rear Support Assembly	M8237-15	1	X								
6B	3/8-16 x 1.00 HHCS (Not Shown)	CF000019	4	X								
6C	Plain Washer (Not Shown)	S9262-120	4	X								
6D	Lock Washer (Not Shown)	E106A-16	4	X								
6E	3/8-16 HN (Not Shown)	CF000067	4	X								
6F	5/16-18 HN (Not Shown)	CF000029	4	X								

Welding Generator & Coupling (1 of 2)

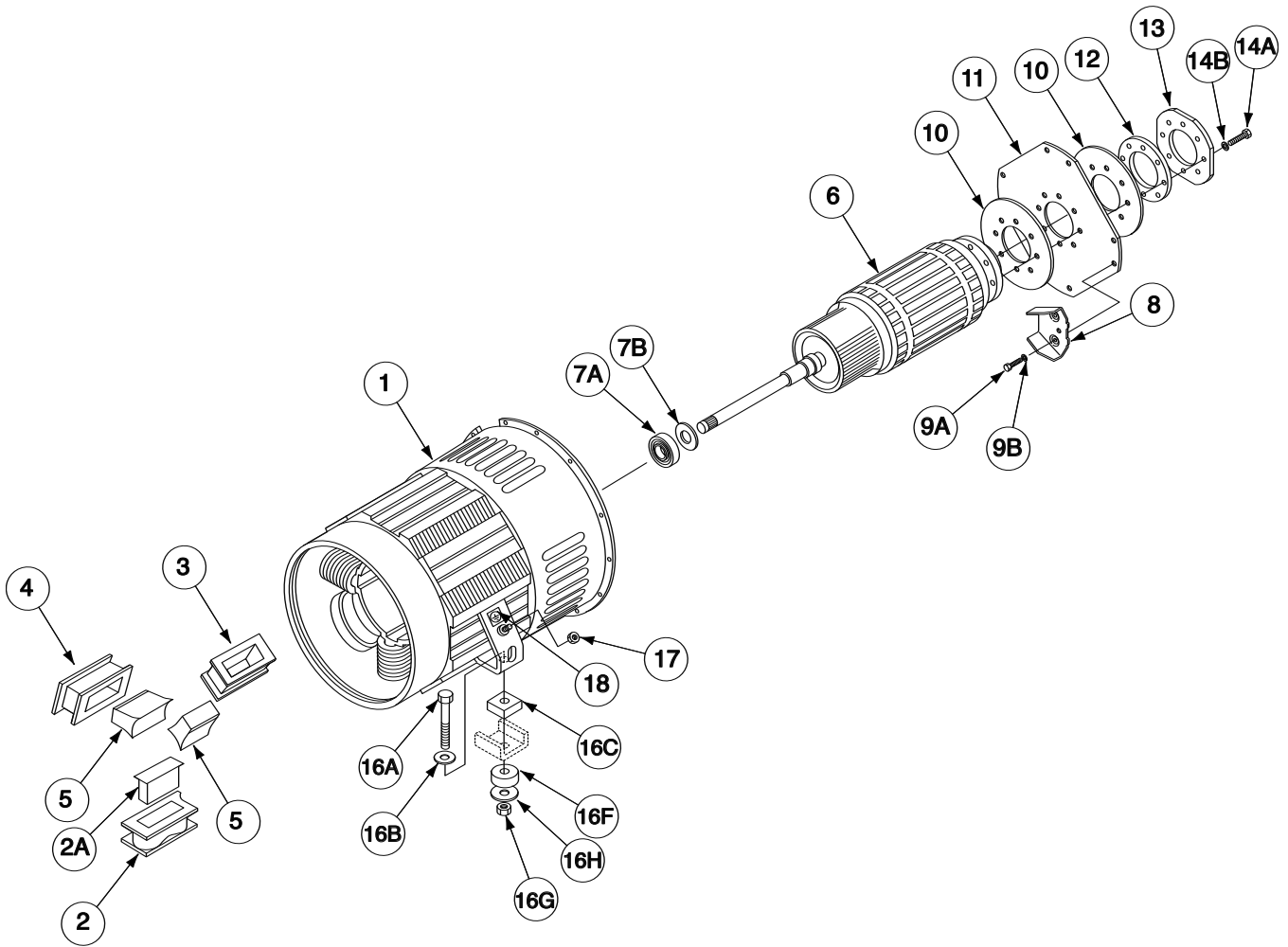


Indicates a change this printing.

Use only the parts marked "x" in the column under the heading number called for in the model index page.

ITEM	DESCRIPTION	PART NO.	QTY.	1	2	3	4	5	6	7	8	9
1	Exciter End Bracket	L6061-7	1	X								
2	Baffle	M13683	1	X								
2A	Thread Forming Screw (Not Shown)	S9225-8	4	X								
2B	Plain Washer (Not Shown)	S9262-23	4	X								
2C	Lock Washer (Not Shown)	T9860-6	4	X								
3A	Bracket Cover	L3391-46	1	X								
3B	1/4-20 x 2.00 RHS	CF000143	2	X								
3C	Lock Washer	E106A-2	2	X								
3D	Square Nut	CF000232	2	X								
4	Rotor Assembly Alternator	M13641-4	1	X								
5	Armature Sleeve Collar	T14337	1	X								
6	Exciter Nut Washer	T7090-1	1	X								
7	Exciter Nut	T6225-1	1	X								
8A	Exciter Shroud	L8254	1	X								
8B	Lock Washer	T9860-6	3	X								
8C	Thread Forming Screw	S9225-8	3	X								
9A	Blower Shroud	L6129-1	1	X								
9B	Self Tapping Screw	S8025-91	4	X								
10	Alternator Brush Holder & Bracket	See P-737-M1	1	X								
11	Rocker & Brush Holder Assembly	See P-737-N1	1	X								
14	Generator Brush (Not Shown)	T2687	8	X								
15A	7/16-14 x 1.50 HHCS	T8833-2	4	X								
15B	Lock Washer	E106A-8	4	X								
17A	1/4-20 x .75 HHCS	CF000014	2	X								
17B	Plain Washer	S9262-23	2	X								
17C	Lock Washer	E106A-2	2	X								
17D	1/4-20 HN	CF000017	2	X								

Welding Generator & Coupling (2 of 2)

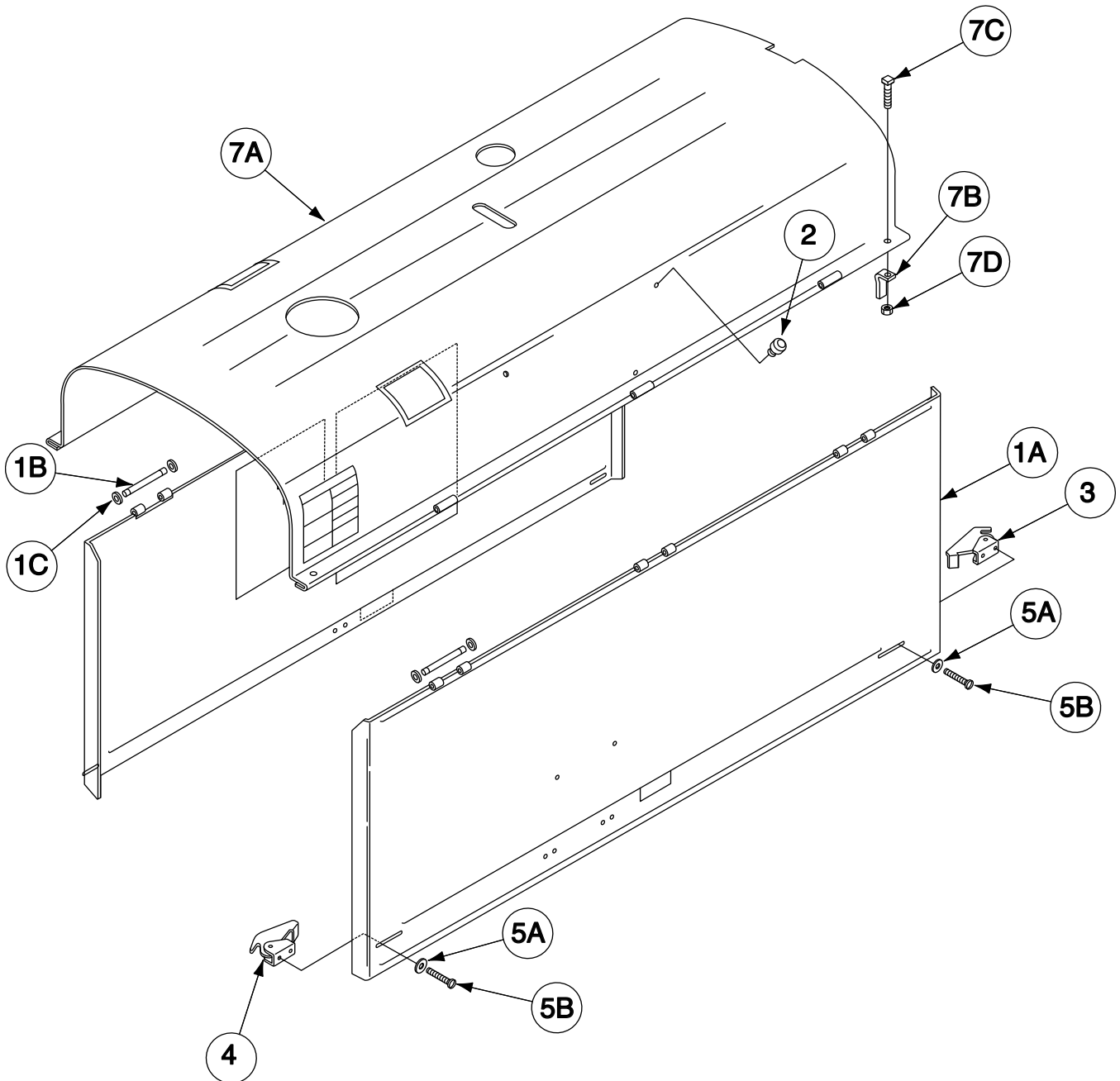


Indicates a change this printing.

Use only the parts marked "x" in the column under the heading number called for in the model index page.

ITEM	DESCRIPTION	PART NO.	QTY.	1	2	3	4	5	6	7	8	9
1	Generator Frame Assembly, Includes: Frame Assembly	L8576-13 L9137-4	1 1	X X								
2	Interpole Coil & Pole Includes:	S12261-26	4	X								
2A	Interpole Coil	S12261-26A	4	X								
2A	Interpole Lamination	S12260-8	4	X								
3	Shunt Coil (Top)	L1741-82	1	X								
3	Shunt Coil (Bottom)	L1741-83	1	X								
4	Series Coil (Top)	L16319-1	1	X								
4	Series Coil (Bottom)	L16319-2	1	X								
5	Main Poles	S10745-14	4	X								
6	Armature	M7014-14	1	X								
7A	Bearing	M9300-180	1	X								
7B	Bearing Shoulder Ring	S18541	1	X								
8	Blower Segments (Sold in Set of 4 Only)	M14361	1	X								
9A	7/16-14 x .75 HHCS (Blower Segments to Engine Coupling)	T8833-44	8	X								
9B	Lock Washer	E106A-8	8	X								
10	Disc Backing Plate	S8042	2	X								
11	Coupling Disc	M6730	1	X								
12	Coupling Ring (Inside)	S14233	1	X								
13	Coupling Ring (Outside-Closest to Engine)	S14232	1	X								
14A	7/16-14 x 1.50 HHCS (Coupling Rings to Armature Hub)	T8833-2	8	X								
14B	Lock Washer	E106A-8	8	X								
15A	3/8-16 x 1.00 HHCS (Not Shown)	CF000019	5	X								
15B	Lock Washer (Not Shown)	E106A-16	5	X								
16A	1/2-13 x 2.75 HHCS	CF000123	2	X								
16B	Plain Washer	S9262-1	2	X								
16C	Welder Foot Support Rubber	T8823	2	X								
16E	Mounting Bracket (Not Shown)	S10040-86	2	X								
16F	Rubber Pad	T8822	2	X								
16G	1/2-13 HLN	T9187-4	2	X								
16H	Plain Washer	S9262-5	2	X								
17	3/8-16 HN	CF000067	2	X								
18	Ground Decal	T13260-4	2	X								

Roof & Doors

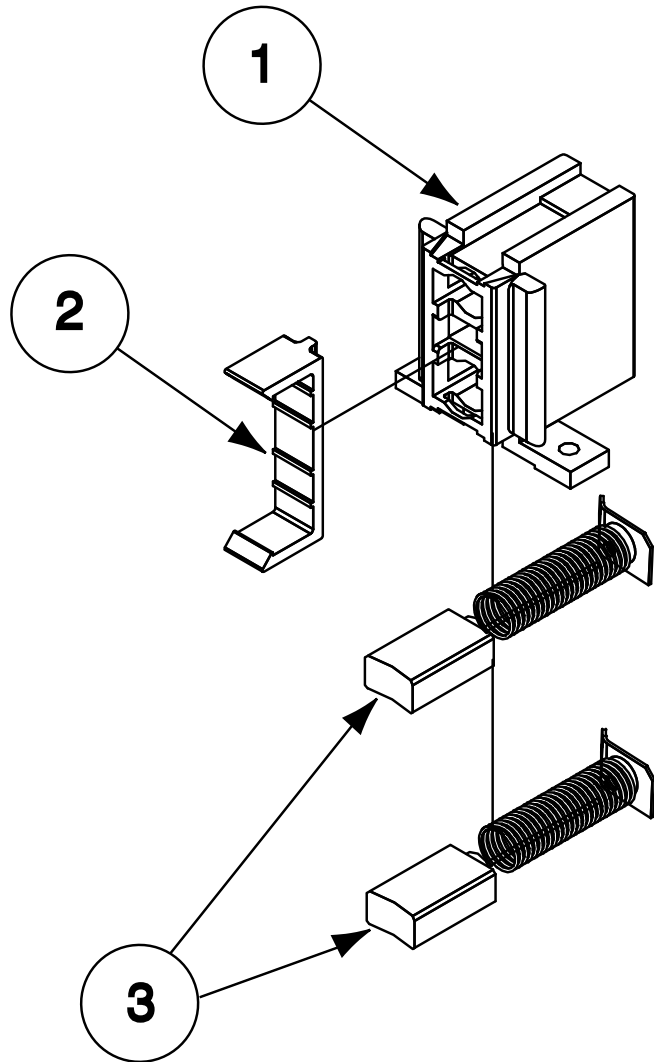


Indicates a change this printing.

Use only the parts marked "x" in the column under the heading number called for in the model index page.

ITEM	DESCRIPTION	PART NO.	QTY.	1	2	3	4	5	6	7	8	9
1A	Door	L6659-8	2	X								
1B	Door Hinge Pin	S20295	6	X								
1C	Retaining Ring	S9776-62	12	X								
2	Door Bumper (Mounts in Roof)	T15154	4	X								
3	Door Hook Assembly	S10656-3	2	X								
4	Door Hook Assembly	S10656-4	2	X								
5A	Door Hook Washer	T10878	4	X								
5B	Self Tapping Screw	S8025-92	8	X								
7A	Roof	L5193-7	1	X								
7B	Roof Mounting Angle	S13593	4	X								
7C	5/16-18 x 1.50 SQHS	CF000258	4	X								
7D	5/16-18 HLN	T9187	4	X								
9	Warning Decal (Not Shown)	S25896-1	1	X								
10	CO Warning Decal (Not Shown)	M21436	1	X								
11	Fuel Warning Decal (Not Shown)	T13086-205	1	X								
12	Door Slide (Not Shown)	S30157	2	X								
13	Wiring Diagram (Not Shown)	M24777	1	X								

Alternator Brush Holder

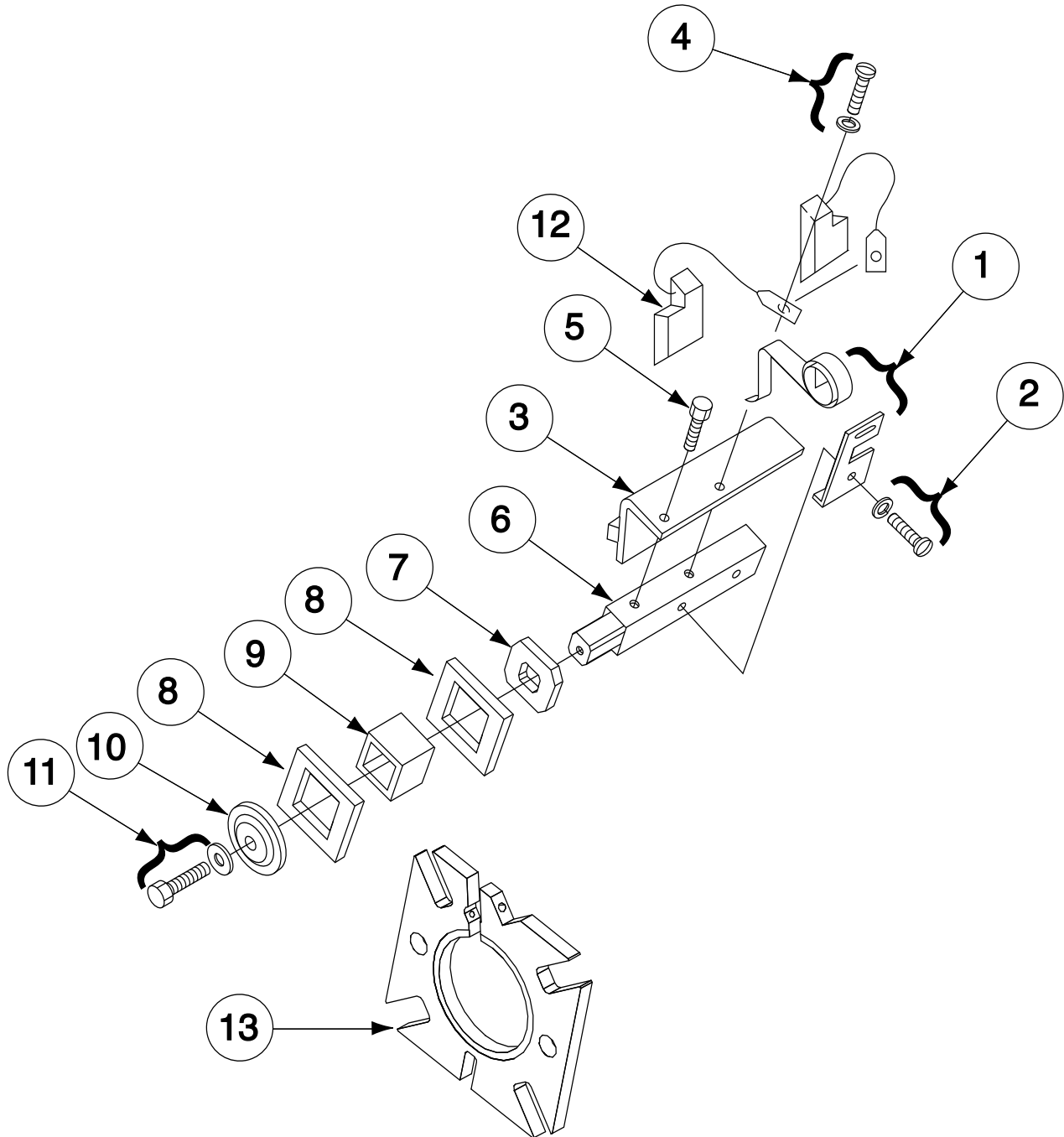


Indicates a change this printing.

Use only the parts marked "x" in the column under the heading number called for in the model index page.

ITEM	DESCRIPTION	PART NO.	QTY.	1	2	3	4	5	6	7	8	9
1	Alternator Brush Holder Assembly, Includes: Brush Holder Cartridge	M16158 G2114	1 1	X X								
2	Brush Assembly Retainer	M16157	1	X								
3	Brush Assembly	S19480	2	X								
4	Brush Holder Bracket (Not Shown)	M19896	1	X								

Generator Brush Holder

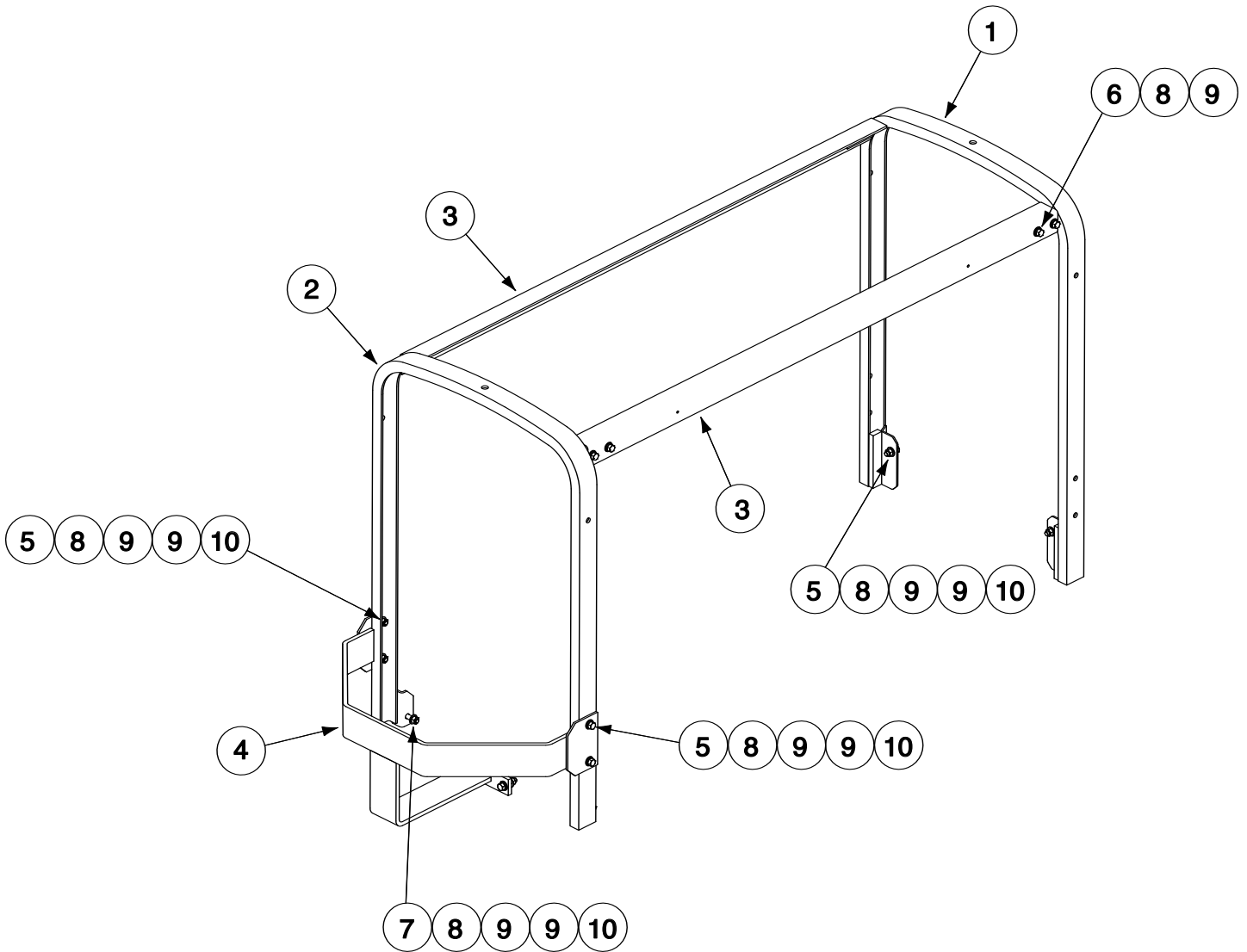


Indicates a change this printing.

Use only the parts marked "x" in the column under the heading number called for in the model index page.

ITEM	DESCRIPTION	PART NO.	QTY.	1	2	3	4	5	6	7	8	9
1	Rocker & Brush Holder Assembly	S13247-54	1	X								
2	Spring & Clip Assembly	T8495	2	X								
2	5/16-18 x .75 HHCS	CF000040	2	X								
3	Plate and Retainer Assembly	M6304-2B	1	X								
4	5/16-18 x .75 HHCS	CF000040	1	X								
5	5/16-18 x .625 HHCS	CF000106	1	X								
6	Stud	M6963-4	1	X								
7	Clamping Washer	T9020	1	X								
8	Insulating Washer	T4479	2	X								
9	Insulating Tube	S13721-1	1	X								
10	Clamping Washer	T2414	1	X								
11	3/8-16 x 1.00 HHCS	CF000019	1	X								
11	Lock Washer	E106A-16	1	X								
12	Generator Brush	T2687	8	X								
13	Rocker Assembly, Includes:	S16986-1	1	X								
	Rocker	M9857-1	1	X								
	Lock Washer (Not Shown)	E106A-2	1	X								
	1/4-20 x 2.00 HHCS (Not Shown)	T8833-22	1	X								

Roll Cage Assembly



Indicates a change this printing.

Use only the parts marked "x" in the column under the heading number called for in the model index page.

ITEM	DESCRIPTION	PART NO.	QTY.	1	2	3	4	5	6	7	8	9
1	Roll Cage Assembly, Includes:	L16582	1	X								
1A	Rear Support Assembly	M25108	1	X								
2	Front Support Assembly	M25085	1	X								
3	Side Rail	M25109	2	X								
4	Bullnose Assembly	M25086	1	X								
5	3/8-16 x .50 HHCS	CF000019	6	X								
6	3/8-16 x .75 HHCS	CF000034	8	X								
7	3/8-16 x 1.50 HHCS	CF000066	4	X								
8	Lock Washer	E106A-16	18	X								
9	Plain Washer	S9262-120	28	X								
10	3/8-16 HN	CF000067	10	X								

NOTES

D300K 3+3 SE KUBOTA

**Red-D-Arc
Welderrentals.**